



2017/18

---

**ANNUAL REPORT**  
ASTC SCIENCE WORLD SOCIETY

# 2017/18 STATISTICS

---

**749,790** Visitors

**55,793** Members

**422** Volunteers

**32,441** Volunteer hours

**120,113** Students reached  
across the province

**869,903** Total number of visitors  
and students reached both  
at TELUS World of Science,  
and across the province.







## OUR MISSION

---

Through science and nature,  
we ignite wonder and empower dreams.

## OUR VISION

---

Within a generation, Canada will be  
a country of thriving, sustainable communities  
rooted in scientific literacy, technological  
innovation and a deep connection to nature.

It's been an incredible year and we couldn't have done it without you! New galleries, homegrown exhibitions, community partnerships and collaborations, the list goes on. This year, we want to celebrate our new strategy and highlight some of the wins we've had.

Thanks to the success of our second annual Science of Cocktails event that supports our *Class Field Trip Bursary*, we were able to bring almost 9,338 students to Science World, during the 2017/18 school year, who otherwise would not have been able to visit.

This year also marks the 10<sup>th</sup> anniversary of our *BC Green Games* contest. *BC Green Games* supports BC teachers and promotes place-based environmental education all across British Columbia. Over a thousand projects have been received and can be seen on the *BC Green Games* website. Congratulations to all the teams across BC for their environmental stewardship!

Empowering students across the province to make local STEM connections has proven to be a valuable tool in support of the new BC inquiry-based curriculum:



"The [*Scientists and Innovators in the Schools*] experience exceeded my expectations. It was great for the students to meet with a scientist from our community. Mark connected well with the children and used an inquiry approach that had them highly interested and engaged. This was a great experience for all involved."

-Teacher at St. Ann's Academy, Kamloops

We hope that you find this year's report inspiring and we look forward to another year of igniting wonder and empowering dreams across British Columbia.

# CHAIR & CEO REPORT

As the new Chair of Science World's Board, it is my pleasure to welcome you to this year's Annual Report. I've been an active member of this Board since 2012, with the last 2 years serving as Vice Chair. I'm excited to be working with the Science World team on the launch of the organization's new strategy.

Here are just a few highlights from this incredible year: we opened a new gallery called Wonder, just for our 5-and-under scientists, we reimaged and reopened our beloved BodyWorks Gallery, we developed our own amazing exhibition about Canadian innovation—*Made in Canada* and we expanded our popular *Future Science Leaders* program for teens.

Thank you for all your support over the last year and I hope you will join us for another year of amazing programming and events.

Launi Skinner  
Chair



As I reflect on my first year as President and CEO of Science World, I am delighted by the energy and the passion that I experience every day in this incredible organization. It has been an amazing year, with several new exhibitions supporting record-breaking attendance and Membership. Guided by a bold, new strategy, we are thrilled to be embarking on a journey to “ignite wonder and empower dreams through science and nature.” One exciting new initiative is Symbiosis, a deeply collaborative, cross-sector learning ecosystem aimed at empowering the dreams of children, youth and young adults throughout British Columbia. A second pivotal initiative will empower the dreams of our community by turning Science World into a convening hub, a place for community members to boost their understanding and engage in dialogue around issues at the intersection of science, society and sustainability. These are indeed exciting times. I am grateful to everyone who is supporting our journey: our Board, Advisory Council, donors, partners, Members, the Science World team, volunteers, advisory groups and collaborators. Thank you for sharing in Science World's adventure!

Dr Scott D. Sampson  
President & CEO



# BOARD OF DIRECTORS

## OFFICERS

Chair	Launi Skinner
Vice Chair	Cheryl Slusarchuk
Secretary	Dr 'Lyn Anglin
Treasurer	Lui Petrollini
Past Chair	Walter Segsworth

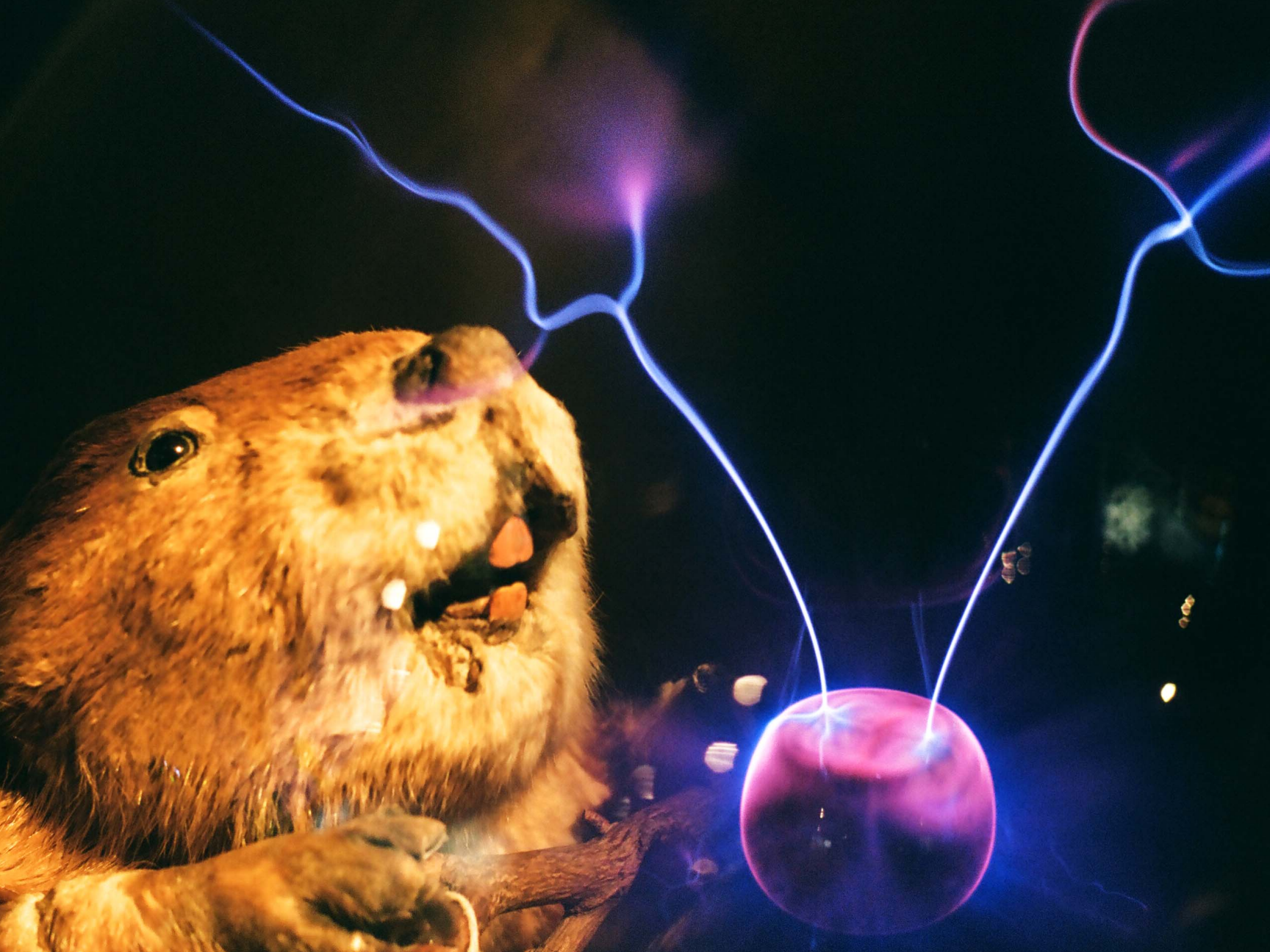
## MEMBERS

Pankaj Agarwal	Doug Kinsey	Doug Sheppard
Dr Steve Cardwell	Ivor Luk	Rich Simons
Stuart Culbertson	David Parker	Laurence R. Stinson QC
Claire Cupples	Ali Pejman	Sandra Wear
Jenny Drake	Kathie Scouten	Dr Boris Wertz

# SENIOR LEADERSHIP TEAM

Dr Scott D. Sampson	President & CEO
Brian Radburn	Vice President, Corporate Operations & Chief Financial Officer
Andrea A. Durham	Vice President, Exhibits, Digital, and Evaluation
Pauline Finn	Vice President, Community Engagement
Teresa Virani	Vice President, Marketing and Communications









*Made in Canada* was our premier summer exhibition that celebrated Canada's sesquicentennial. Created in-house with many community partners, the exhibition featured Canada's remarkable history of innovation. Visitors were invited to imagine, create and test their prototype designs. A portion of the exhibition was subsequently developed into our new Tinkering Space: The WorkSafeBC Gallery.

## IMPACT

**300,000+** innovators created with us!

## SUPPORTERS

YVR, Presenting Sponsor

Archiact VR

Ava Technologies

Bionic Power

D-Wave

General Fusion

Kindred AI

McKesson

Wavesine



*"Made in Canada* is one of the best (new) children exhibitions at Science World. This is exactly what I'm looking for as a Member. However, I was extremely disappointed to learn that it's only temporary. How can we make this a permanent exhibition?"

– Science World Member

# THE SCIENCE OF RIPLEY'S BELIEVE IT OR NOT!



Presented by Save-On-Foods, this unique exhibition took visitors on an incredible journey through the curious collections of Mr Ripley, who travelled the world collecting remarkable artifacts and stories. Visitors discovered the science behind the most extreme animals to have ever lived and dived into the complexities of human biology. For the first time ever, visitors were able to view the original Luke Skywalker® Lightsaber® in the exhibition during its limited engagement in Vancouver.

## IMPACT

Over **225,300** visitors explored *Ripley's* during its 4 month showing.

Over **400** visitors experienced a special adult evening, themed around Luke Skywalker's® original Lightsaber®.

## SUPPORTERS

Save-On-Foods,  
Presenting Sponsor



*"The Science of Ripley's Believe It or Not! exhibition is very interactive and fascinating. We learned a lot about the cool facts that Ripley collected over his lifetime. My kids were completely engrossed."*

-Visitor



The Wonder Gallery provides a highly interactive space where young children, ages 0–5, can learn through play. Created with the collaboration of child development experts, the gallery boasts 3,300 square feet where early learners can crawl, splash, build, climb and experiment to their heart’s content.

## IMPACT

From March to December 2017, Memberships with children under 3 nearly **doubled** from the same period in 2016.

## SUPPORTERS

**These donors contributed \$50,000 or more towards the creation of the Wonder Gallery:**

Shafin Diamond & Minu Tejani—  
Experiment Bus

Estate of Frieda Meyer

Impark—Stroller Parking and Overflow Lot

The Munford Family—Build Area

Manny & Sunita Padda—Climb Area

Walter & Nancy Segsworth—Pearl’s Pools



“My daughter had so much fun discovering and rediscovering all the stations in the gallery. She loves the water station and the foam sand area. As a parent, I love that she was able to feed her sensory needs by playing in these areas.”

– Mother of child with ASD



# TINKERING SPACE: THE WORKSAFEBC GALLERY

Tinkering Space: The WorkSafeBC Gallery opened in September, 2017. This gallery facilitates and nurtures hands-on creativity and problem-solving, while emphasizing safe practices and general safety awareness. Visitors can make new things from existing parts, solve problems and learn by making mistakes.

## IMPACT

Over **2,600** students (**119** groups) participated in one of three design thinking/tinkering workshops available.

The gallery is supported by **8** committed and enthusiastic volunteers, who enjoyed engaging visitors during the **151** days of hands-on programming, with **6** different projects available.

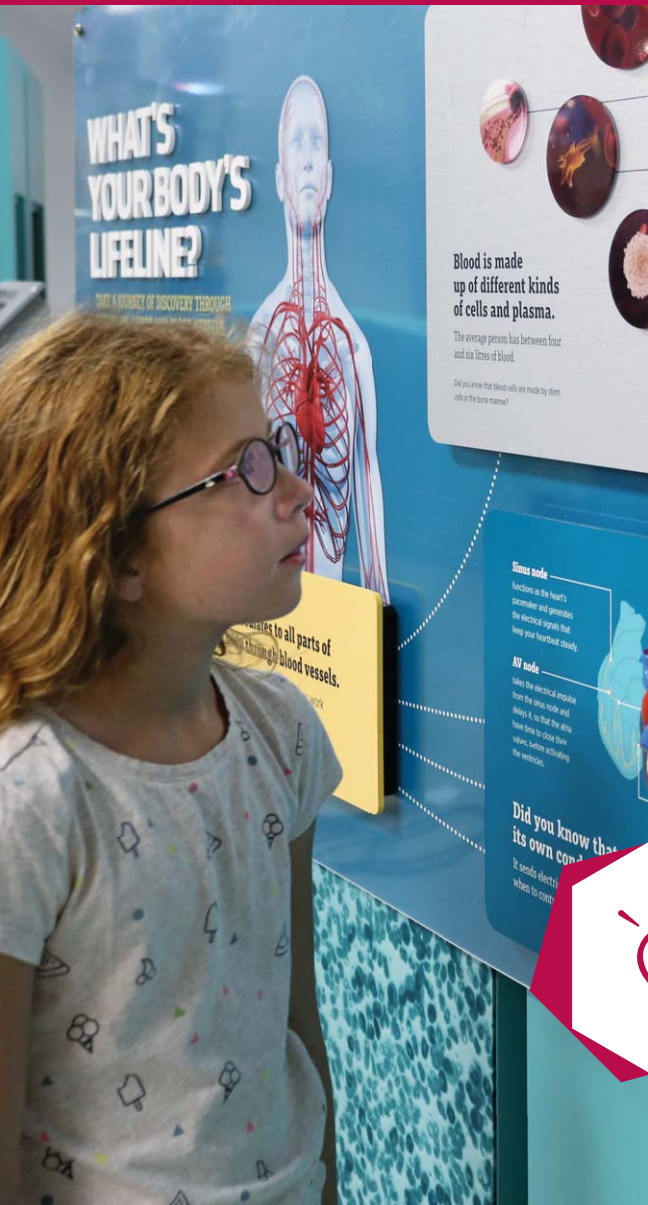
## SUPPORTERS

WorkSafeBC



“The workshop was fantastic. The students were engaged the whole time. They built, rebuilt, talked about, shared ideas about, tested and re-tested their creations. They were so proud and creative. Our workshop leader (Giselle) was awesome—she gave the right amount of instruction and support, but allowed the students to create freely and explore. Everyone’s needs were met and everyone had fun.”

–Teacher



The newly reopened BodyWorks Gallery explores human life sciences and helps visitors gain a better understanding about how the choices they make impact their bodies. BodyWorks promotes positive messaging about the body while celebrating diversity. In the Genome BC Lab Zone, grade 8–12 students use lab equipment to get to know themselves on the cellular level by exploring DNA, genetics and the rapidly expanding field of genomics. Elementary students learn through hands-on, facilitated activities.

## IMPACT

**Thousands** of school groups visited the reimagined gallery and the overwhelming response from teachers was that it was very engaging.

## SUPPORTERS

Genome British Columbia,  
Lab Zone Sponsor



"I want to say a huge "thank you" for including such an appropriate and realistic sex section in your BodyWorks Gallery ... it was so refreshing to see sex ed presented in such a normal, respectful, non-judgmental way!"

– Science World visitor

# SHARING SPACE WITH WILDLIFE EXHIBIT



As part of the Canada 150+ celebrations, Parks Canada and Science World unveiled Sharing Space with Wildlife, an interactive exhibit located in the Ken Spencer Science Park. With a focus on wildlife found in the Rocky Mountain National Parks, this exhibit educates children and adults on the importance of protecting wildlife by building wildlife crossing structures. Children engage in hands-on explorations while learning how animals use these crossings to navigate safely around the parks' busy highways.

## IMPACT

**Thousands** of children climbed, crawled and channelled their favourite animals, as they discovered how wildlife can safely cross our busy highways.

## SUPPORTERS

Parks Canada



“Parks Canada’s partnership with Science World on this exhibit provides an opportunity for urban children, youth and families to learn about wildlife and how they move, not only in our national parks, but in their own back yard. Although some urban populations may never visit a national park, this exhibit helps foster an appreciation and connection to these special places and the natural world around them. Parks Canada is proud of this exhibit and partnership with Science World and we look forward to continuing to work together.”

– Lindsay McPherson, Parks Canada Agency





On November 28, 2017, Science World took part in the global movement known as GivingTuesday. The campaign consisted of an online giving component and admission by donation to Science World that evening. Proceeds from GivingTuesday benefited *Super Science Club*, an after-school program for students in grades 1–7 at 18 underserved schools in Vancouver and the Fraser Valley.

## IMPACT

GivingTuesday raised over **\$21,000** in donations, with the average donation being close to **\$300**!



“My daughter thought science is rather for boys, but now she’s so into it. Thanks for the generous donation.”

– *Super Science Club* parent

## SUPPORTERS

---

**We'd like to thank all of our GivingTuesday campaign donors. The following donors made a contribution of \$100 or more.**

Rita & Pankaj Agarwal

Dr 'Lyn Anglin

Kathy Butler

Dr Steve Cardwell

Mila Cotic

Stuart Culbertson

Claire Cupples

Jenny Drake & Mike Cormack

Jeffrey Druce

Karen Marshall Ducommun

Andrea Durham & Karl Jessen

Dr Sandra Eix

Pauline & Brian Finn

Gail & Clifford Fraser

Paul & Nicole Geyer

Ashley Harrison

Doug Kinsey & Annie Desgagne

Ingrid A. Lae

Shellina Lakhdhir & Family

Aaden, Brennan, Connor & Ivor Luk

Catherine McPherson

Bjorn Moller

John Murphy & Leslie Lee

Janice Noble

David Parker

Lois & Matthew Pedley

Ali & Kirsten Pejman

Kim Peterson

Lui Petrollini

Hanne Phan

PM Search Partners

Brian Radburn & Mary Sharkey

Dr Scott D. Sampson

Science World Visitors, Gate Donations

Walter & Nancy Segsworth

Doug Sheppard

Rich & Linda Simons

Launi Skinner

Cheryl Slusarchuk & Kevin Gulstene

Laurence & Karola Stinson

Cindy Taylor

Mossadiq Umedaly

Anuja & Praveen Varshney

Sandra Wear

Greg Weinrauch

Wertz Family Foundation

Faye Wightman

Anonymous

# FUTURE SCIENCE LEADERS



The award-winning *Future Science Leaders* program inspires and challenges top students to excel in science and technology. Students participate in skill-building activities and innovative learning in topics typically reserved for universities. They interact with science and technology leaders and explore scientific research, academic theory and industry applications.

## SUPPORTERS

Rita & Pankaj Agarwal

Pavel & Kavita Bains

Alex Chattwood

Coast Capital Savings

James & Janet Dean

Jenny Drake & Mike Cormack

Andrew & Nuala Harries

John Murphy & Leslie Lee

SAP Canada

STEMCELL Technologies

The Highbury Foundation

Wertz Family Foundation

We acknowledge the financial assistance of the Province of British Columbia



“The *Future Science Leaders* students inspire me with their curiosity, energy, hard work and fearlessness to dive into subjects, projects and dialogue. Ninety-nine percent of our alumni go on to study STEAM subjects in university and many students are awarded top scholarships. This proven model builds a community of peers and access to a terrific variety of professionals and companies that offer support, guide and inspire these potential-filled youth at such a critical time in their lives.”

– *Future Science Leaders* Advisor



# SUPER SCIENCE CLUB



*Super Science Club* is an award-winning after-school program that provides science and technology activities to underserved students in grades 1–7 in 12 schools, including Xpey' Elementary, Vancouver's Aboriginal Focus School. The goal is to inspire students' long-term interest in science and technology.

## SUPPORTERS

---

HSBC Bank Canada,  
Presenting Sponsor

BC Hydro

CLICK—Contributing to  
the Lives of Inner City Kids

Enterprise Holdings Foundation

Fluor Canada Ltd.

John Hardie Mitchell  
Family Foundation

Proceeds from Alfresco 2017

Proceeds from GivingTuesday 2017

Provincial Employees  
Community Services Fund

Stewart Fund, a donor advised  
fund of the Vancouver Foundation

The Printing House

Willow Grove Foundation,  
Dr Andrew S. Wright &  
Dr Helen Newton



“My daughter loves it! She brings up science in conversation. It has helped her understand the world around her and how things work.”

–*Super Science Club* parent

# SCIENTISTS AND INNOVATORS IN THE SCHOOLS



*Scientists and Innovators in the Schools* is a volunteer-based program that helps address British Columbia's need for more scientists, engineers, technologists and technicians, by promoting students' interests in these areas. The goal is to inspire students with exciting, in-school presentations by real scientists. The program is offered to grades K–12 everywhere in BC.

## IMPACT

In 2016/17, **240** volunteers visited **420** schools in **128** communities across British Columbia, delivering free presentations to **39,196** students.

## SUPPORTERS

Association of Consulting  
Engineering Companies BC

Trudi Coblenz

Natural Sciences and Engineering  
Research Council (NSERC)

We acknowledge the financial  
assistance of the Province of  
British Columbia



"Thanks for giving us the opportunity to do hands-on science in our classroom! I was very surprised how few students had been to Science World, so this type of programming is obviously needed in small, rural places such as Invermere!"

–Teacher, J. Alfred Laird Elementary, Invermere



Science World's *On The Road* program travels across the province to bring the excitement of science to communities throughout BC. A touring science show, this program uses fun, inquiry-based demonstrations to engage the people of British Columbia in science in order to ignite wonder and stimulate learning. In the first seven years of the program, *On The Road* made more than 1,000 visits to large and small communities throughout BC, reaching more than 1.3 million people, including more than one million students in grades K–12.

## IMPACT

This year, **30,000** students attended live shows, an increase of **2,000** students from last year.

New communities reached since the program relaunched include Bamfield, Port Hardy, Alert Bay, New Aiyansh, Invermere and Revelstoke.



“Bamfield is such a tiny, remote place, yet it’s filled with a passion for science. They have approximately 16 students across all grades. The kids were so excited to have us. We presented a show and then let them present the demos themselves. It has changed my outlook on what a school in BC can look like.”

– *On The Road* team member

## SUPPORTERS

BC Hydro

Marna Disbrow

Imperial Oil Foundation

Natural Sciences and Engineering  
Research Council (NSERC)

Proceeds from Origins of Wine 2017

We acknowledge the financial  
assistance of the Province of  
British Columbia



# BC GREEN GAMES



This year, *BC Green Games* is celebrating 10 years of digital eco-storytelling across the province! *BC Green Games* is a province-wide, sustainable storytelling contest for students from kindergarten to grade 12 that inspires action and encourages collaboration. Over the past 10 years, more than 1,000 inspirational eco-action projects have been submitted.

## IMPACT

151 projects

27 school districts

1,693 students  
received free field trips

96 community coaches

Over 1,000 projects  
catalogued on *BC Green Games* website to inspire  
students around the province.

## SUPPORTERS

Call2Recycle Canada

ReGeneration



“Whenever I review the projects, I am so amazed at the energy from the students and their communities. *BC Green Games* has had such a positive influence on this generation of students and those to come.”

– Briar Ballou, *BC Green Games* Judge



# COMMUNITY SCIENCE CELEBRATION



The Community Science Celebration is a showcase of the community for the community. It includes eye-popping shows, demonstrations, challenges and an opportunity to meet people in your community doing cool STEM (science, technology, engineering and math) every day. The focus of a Community Science Celebration is on the positive impact that science, technology and innovation has on a region's economy. All events are free.

## IMPACT

The number of events increased from **2** last year to **7** this year.

Attendees grew from **1,600** to over **6,000** this year.

## SUPPORTERS

BC Hydro

We acknowledge the financial assistance of the Province of British Columbia



"It is so inspiring to see entire communities impacted by our visits. After visiting Royston Elementary with *On The Road* in May 2017, the teachers and community of Royston took it upon themselves to host their own Community Science Celebration, which we were able to assist and support them in. It feels so great to know that our visits aren't just a one-off and that science curiosity continues even after we leave!"

–*On The Road* team member

# BIG SCIENCE FOR LITTLE HANDS



Through *Big Science for Little Hands* workshops, early childhood educators learn how to promote hands-on scientific exploration with their students. Teachers learn about concepts and key questions that will help them deliver impactful activities, to both small and large groups, that are adaptable to any teaching environment. Next year, we are planning two workshops per month, in the Lower Mainland and in communities around BC.

## IMPACT

Over **100** educators participated in *Big Science for Little Hands* workshops this year in the Cowichan Valley, Terrace, Langley, Maple Ridge and Surrey.

## SUPPORTERS

Imperial Oil Foundation

We acknowledge the financial assistance of the Province of British Columbia



“Thank you for the opportunity to expand my knowledge on presenting science and everyday materials in my program. It was a lot of fun. I can see that the children will have fun times.”

– Workshop participant

# SUMMER SCIENCE CAMPS



Summer Science Camps are a fun and educational way for children and youth ages 5–15 to experience hands-on science. Designed to ignite wonder, build a child's confidence and encourage curiosity in science, children participate in a variety of STEM (science, technology, engineering and math) activities. Thanks to the support of TELUS Community Ambassadors, we are able to offer bursaries to children who otherwise could not afford to attend camp.

## IMPACT

The 2017 summer camps were a huge success with **633** campers participating.

TELUS Community Ambassadors provided bursaries for **6** campers.

## SUPPORTERS

Summer Camp Bursaries  
TELUS Community Ambassadors

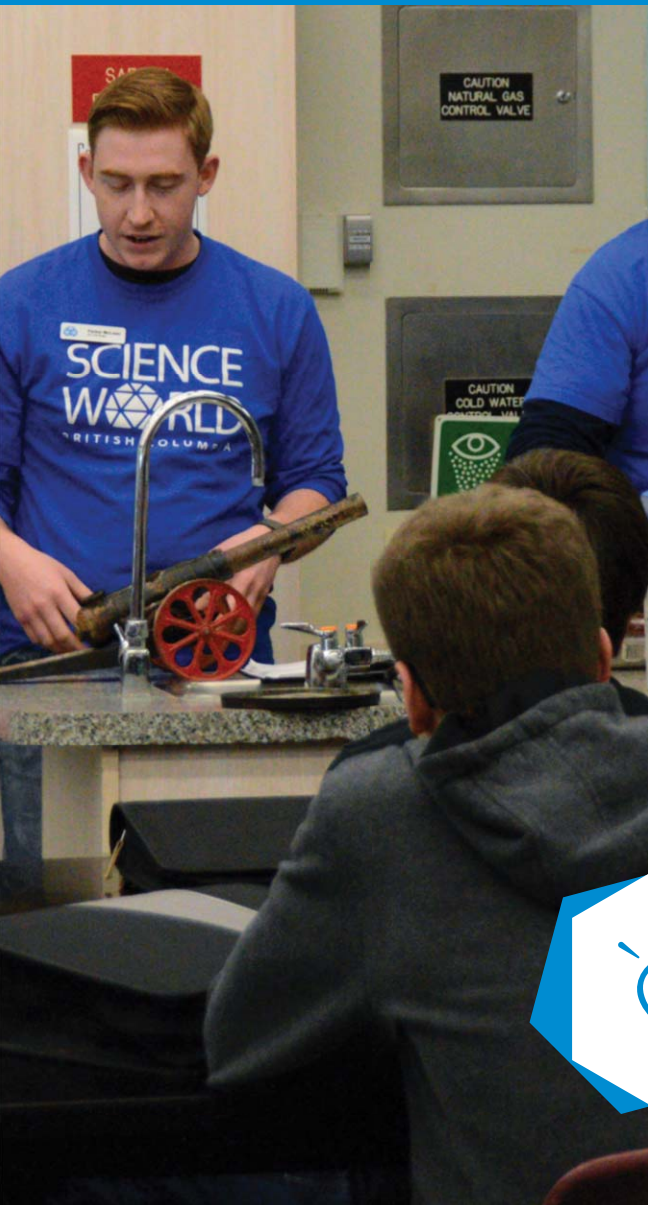


“Dear Science World donors, thank you for your generosity, which allowed our daughter to participate in summer camp. Without the bursary, a science camp would not be accessible to our family. With your support, our daughter learned about how engineers design buildings so that they are earthquake proof. She also learned about how hydraulics work and then built her own hydraulic machine. Thank you!”

– Summer Camp parent



# HIGH SCHOOL LEADERSHIP WORKSHOP



High school students learn how to deliver fun science demos and activities to an elementary school audience and learn some important mentorship skills along the way. The ultimate goal of this workshop is for students to organize and deliver a family science day or an after-school science event for elementary students or students and their families in their own community. Recommended for grades 10–11.

## IMPACT

Participation doubled this year from **300** students to more than **600** students!

## SUPPORTERS

BC Hydro

Natural Sciences and Engineering Research Council (NSERC)

We acknowledge the financial assistance of the Province of British Columbia



“After the workshop, I would definitely consider putting on a science event for elementary school students—it’s fascinating for young minds!”

– Grade 12 participant from Fort St John



# OPENING THE DOOR



*Opening the Door* is a unique event for students in grades 10–12 across BC who are interested in pursuing a career in science, technology, engineering or mathematics. Students network, develop contacts and engage in panel discussions with professional scientists, engineers, technologists, technicians and teachers who work in a variety of fields.

## IMPACT

This year was the first time that *Opening the Door* visited communities outside of Vancouver, since the relaunch of *On The Road*.

The Dawson Creek event was attended by **200** students, in two sessions, with **10** mentors from the science community available for networking.



“Thank you! I believe it is important to inspire and educate youth and let them know the different careers that are out there. Call me anytime; I’d love to participate again!”

–ASTTBC Mentor from Dawson Creek

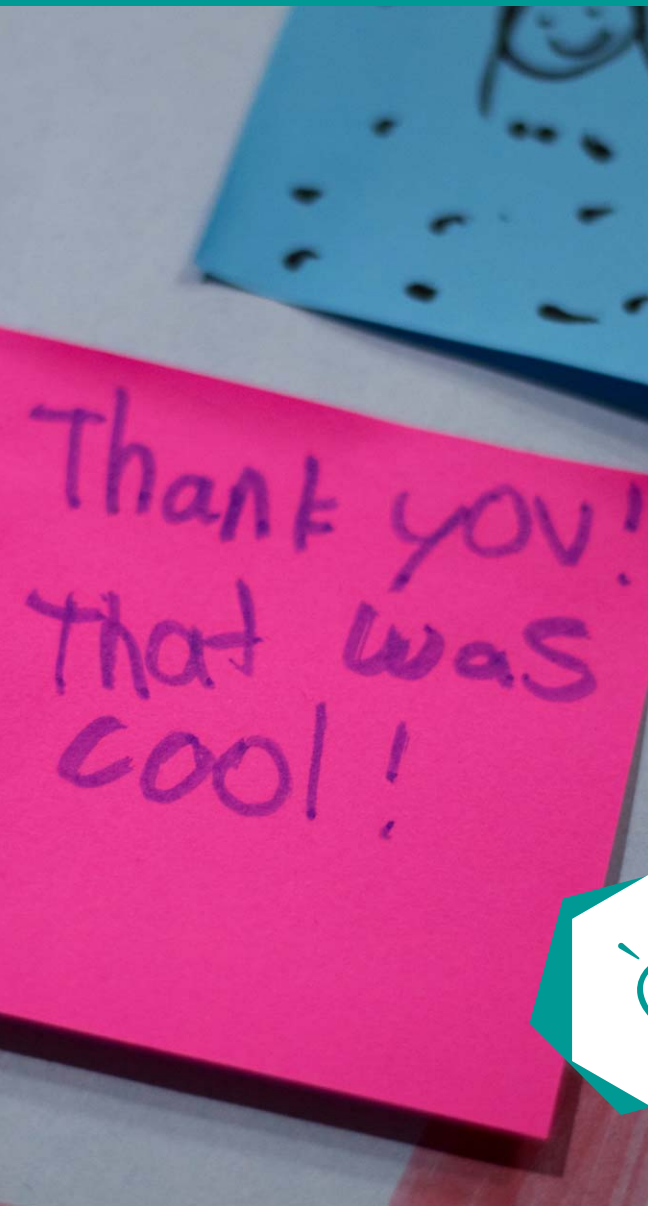
## SUPPORTERS

BC Hydro

Natural Sciences and Engineering Research Council (NSERC)

We acknowledge the financial assistance of the Province of British Columbia

# CLASS FIELD TRIPS



What student doesn't look forward to a class trip to Science World? Through our *Class Field Trip Bursary* program, students and their teachers from underserved schools have the cost of admission, and in some cases the cost of transportation, to Science World covered. We also host Teen Tuesdays, exclusively for secondary school classes, where we offer grade 8–12 curriculum-connected programming. Teens get to hang out and engage with science in the company of their peers—no elementary groups are booked on those days.

## IMPACT

During the 2017/18 school year, TELUS World of Science welcomed approximately **9,338** students, thanks to the *Class Field Trip Bursary* program. This is almost double last year's number of **4,897**.

The total number of PK-12 students participating in field trips this year was approximately **46,195** (approximately **1,925** classes).

## SUPPORTERS

Proceeds from  
Science of Cocktails 2017

Proceeds from  
GivingTuesday 2017

Teekay Shipping (Canada) Ltd.

United Way Worldwide grant,  
on behalf of the generosity of  
Wells Fargo

We acknowledge the financial  
assistance of the Province of  
British Columbia



"Thank you for this awesome free field trip. It was so much fun being there to learn about roller coasters (sic). Also it was so much fun playing in the hollow tree."

–Kenzie, student recipient of the *Class Field Trip Bursary* program

# SCIENCE OF COCKTAILS



On February 8, 2018, Science World was transformed into Vancouver's largest cocktail laboratory for the third annual Science of Cocktails event. At Science of Cocktails, the city's most talented bartenders and chefs showcased the chemistry, biology and physics behind preparing modern cocktails and cuisine. It was an incredible evening of molecular mixology and gastronomy, fun hands-on activities and science programming. Thank you to everyone who supported, and participated in, our signature event and to all the volunteers who made the night possible.

## IMPACT

---

With over **1,500** guests in attendance, we raised more than **\$276,000** for Science World's *Class Field Trip Bursary* program!



"Thank you for making it free.  
Thank you for everything.  
My favorit (sic) thing was the piano!  
Did you glue the t-rex together?"

- Shelby, student recipient of the  
*Class Field Trip Bursary* program

## SUPPORTERS

---

### Major Supporters

BoldLove Communications

Canadian Professional  
Bartenders Association,  
BC Chapter

Grace Choi Events

Metropolitan Fine Printers Inc.

### Sponsors

1800 Tequila

Absolut Vodka & Kahlua

Ardbeg

Bao Down

Belvedere Vodka

Bruichladdich

Bulleit

Campari

Cointreau & Cazadores

Diplomatico Rum

Donnelly Group

Drew's Catering

Emelle's Catering

Fentimans

Glenmorangie

Hapa Izakaya

Havana Club

Hendrick's Gin

Hennessy

Hornitos Plata

Jack Daniels

Jim Beam Black

Johnnie Walker

Ketel One

Lohin McKinnon Whisky

Lot No. 40

Monkey Shoulder

Nutrl Vodka

Old Forester

Parallel 49

Parallel 49 Street Kitchen

Peake of Catering

Pidgin

Prime Vodka

Queensborough Gin

Remy Martin

Rise

Seedlip

Showcase Restaurant & Bar

SKYY Vodka

Southern Comfort

Tanqueray No. Ten

Two Wolves

The Dirty Apron

The Glenlivet

The Keg

The Lazy Gourmet

Ungava

Walter Caesar

World Class

Zacapa



## SUPPORTERS

---

### Media Sponsors

102.7 THE PEAK

Kiss Radio

Z95.3

### Official Supporters

Bighouse Productions

BU Letters

Flüff Designs

Greater Vancouver

Designated Drivers

Happy Water

Impark Parking/Meridian Valet

Innovation Lighting

Kerry

Kettner Creative

Kian Concert Sound Services

Lavish Liquid

LNG Studios

Lounge Works

MakerLabs

Pedersen's Rentals

Praxair

TRIUMF





Science World partnered with The Dirty Apron to present Alfresco, an intimate culinary experience created by Chef David Robertson and his team. Guests enjoyed an unforgettable evening that included a 5-course long-table dinner, with an emphasis on fresh, local, sustainable ingredients and BC wine pairings. Funds raised benefited *Super Science Club*, an innovative, after-school program that provides free, hands-on STEM learning experiences to students in Grades 1–7 from underserved schools.

## IMPACT

Alfresco raised **\$20,000** for *Super Science Club* and attracted media influencers, including: Colleen Christie, Global TV; Malcolm Parry, Vancouver Sun; Fred Lee, CBC and Vancouver Courier; and Riaz Meghji, City TV.

## SUPPORTERS

Bespoke Decor  
Concert Properties Ltd.  
Nimbus School of Recording and Media  
Parallel 49 Brewing Company  
Pedersen's Rentals and Sales  
Road 13 Vineyards  
The Botanist  
The Dirty Apron Cooking School and Delicatessen  
The Wild Bunch



"The greatest thing about this is that it's for the kids. ...You're coming for an amazing meal and an amazing view, but you're supporting kids in our community."

–Chef David Robertson, The Dirty Apron

# ORIGINS OF WINE



An evening of lively conversation along with wine and food pairings. Moderator Kurtis Kolt and a panel of winemakers from British Columbia's Golden Mile Bench discussed what makes an appellation a sub-appellation and why such designations are important. The event raised funds for Science World's *On The Road* program that provides thousands of kids from outside the Lower Mainland the opportunity to experience the magic of Science World in their hometown!

## SUPPORTERS

---

C.C. Jentsch Cellars  
Checkmate Artisanal Winery  
Chef's Table Backyard Farm  
Culmina Family Estate Winery  
Fairview Cellars  
Linda M. Flegel  
Gehringer Brothers Wines  
Hester Creek Estate Winery  
Inniskillin Winery

Miradoro Restaurant  
at Tinhorn Creek  
Nosh & Nibble  
Poplar Grove Cheese  
Road 13 Vineyards  
Scott Sorrell  
Tinhorn Creek Vineyards  
Upper Bench Estate  
Winery & Creamery

### Media Partners

24 Hours  
CISL 650AM  
Daily Hive  
Georgia Straight  
Vancouver Magazine  
Westender



"Supporting programs like this [*On The Road*] helps to engage youth to explore the wonders of their world and provides an excellent opportunity to raise a generation of kids who are inspired by science, critical thought and insatiable curiosity."

-Joseph Luckhurst, General Manager, Road 13 Vineyards



# 2017 SOLAR ECLIPSE



On August 21, 2017, Science World partnered with the Royal Astronomical Society of Canada (RASC) to host a viewing party for the Great American Eclipse of 2017. The solar eclipse party brought people of all ages together from across the Lower Mainland to share this exciting event. Science World distributed more than 2,000 pairs of eclipse viewing glasses, enabling people to view the eclipse safely.

In the Science Theatre, visitors viewed a live stream hosted by NASA, which showed the total eclipse from numerous sites across the US. Science World staff also travelled to various locations from Vancouver to Oregon to provide information and enrich people's eclipse viewing experience.

## IMPACT

At least **3,000** people gathered outside of TELUS World of Science to view the eclipse!

## SUPPORTERS

Royal Astronomical Society of Canada (RASC)



"Son spent the day at Science World today and was thrilled that someone loaned him their eclipse glasses. Great day for him."

- Pamela Findling, @pfindling



# UNDERSTANDING THE OVERDOSE AND OPIOID EPIDEMIC



On February 28, 2018, Science World held a candid community discussion on the opioid epidemic. This informative evening featured a panel discussion moderated by Don Shafer, Roundhouse Radio CEO and host, with experts that included:

- Dr Mark Tyndall, Director of the BC Centre for Disease Control
- Sergeant Michael Wheeler of the Vancouver Police Department
- Sarah Blyth, a founding member of the Overdose Prevention Society
- Erica Thomson, Regional Peer Coordinator at Fraser Health

One of Science World's strategic pillars is to serve as a community convening hub—a place where people can come together to discuss a diverse range of topics and learn from each other.

## IMPACT

This sold-out event was attended by **175** people, and **10** organizations participated.

## SUPPORTERS

BC Centre for Disease Control  
BCCDC Foundation for Public Health



“Such a cool opportunity today to learn how to use naloxone at the opioid epidemic event today at Science World!”

– Naima Salemhamed, @nsalemhamed



# DONORS

## BUILDING NAMING SUPPORT PARTNER

---

TELUS

## CHAIR'S CLUB & PILLARS OF SUPPORT

---

Ross Beaty

Jim & Samantha Bosa

Ryan & Tonya Bosa

Norm & Pat Francis

Paul & Nicole Geyer

V. Paul Lee & Family

The Louis Family—  
Robin, Linda, Aron, Sheila & Owen

Dr Lindsay Machan

John & Dana Montalbano

John Murphy & Leslie Lee

Bob Quartermain

Walter & Nancy Segsworth

Rich & Linda Simons

The Spencer Family—  
Keith, Sheryl, Bridget & Virginia

Dr Ken Spencer & Judy Gale

Deb & Jim Yeates

## CHAMPIONS CIRCLE

---

Paul & Nicole Geyer

Greg & Nicole Loeppky

Chris & Margaret O'Riley

Launi Skinner

Cheryl Slusarchuk & Kevin Gulstene

## REALIZED EQUITY

---

Delta-Q Technologies Corporation

Jeff & Sonia Hobbs



# DONORS

## GENERAL

---

**Thank you to the following donors for your generous support that has made a tremendous impact on our ability to deliver engaging STEM programs across British Columbia and to revitalize our exhibits and galleries.**

## \$25,000+

---

City of Vancouver

TELUS

Western Economic Diversification Canada

Willow Grove Foundation,  
Dr Andrew S. Wright & Dr Helen Newton

We acknowledge the financial assistance  
of the Province of British Columbia

## \$5,000-\$24,999

---

Dyson Canada Ltd.

Aaden, Brennan, Connor & Ivor Luk

Michael Smith Endowment Fund,  
held at the Vancouver Foundation

Natural Sciences and Engineering  
Research Council (NSERC)

Science World Visitors, Gate Donations

## \$1,000-\$4,999

---

Apple Inc.

BC Tech Association

Broadband TV

Canadian Association of Science Centres

Casey & Jean Forrest

Andrew Harmsworth

HR Tech Group Association

Lohn Foundation

RESAAS

Science World TechPong team

Keith, Sheryl, Bridget & Virginia Spencer

STAT Search Analytics

TransCold Distribution Ltd.

Trez Capital Limited Partnership

Bob & Carol Wiens

Anonymous  
(2017 Barbara Brink Internship)

# DONORS

## \$500-\$999

---

Brian Radburn & Mary Sharkey

Society for Canadian Women  
in Science and Technology

Unbounce

Urban Impact Recycling Ltd

Greg Weinrauch

Anonymous

## \$100-\$499

---

Dr 'Lyn Anglin

Ryan Brown

Mona Chan

Alex Chattwood

Geoffrey Chum

Mila Cotic

Eveline Davey

Patti Eix

Dr Sandra Eix

Elizabeth Elliot

Emily Godin

Lili Hao

Sunny Hiral

Gavin Hoekstra

Carolyn Jimenez

Alfred Kee

Graham & Angela Lee

Douglas Mackenrot

Kathy MacRae

Joan Man

Kim Peterson

Petite Puf

PIXSTAR Photobooth Rentals

Dawna Richardson

Donald H. Risk

Emily-Joy Samli

Ken A. Schneider

Doug Sheppard

Christopher Simmons

Cheryl Slusarchuk & Kevin Gulstene

Bhuwan Sood

Sarah Stewart

Laurence & Karola Stinson

Maureen Sullivan

Michelle & Michael Thompson

Crystal White

Workday, Inc

Anonymous







To be named a Friend of Science World is an honour bestowed by the Membership of Science World on an individual who personifies the goals and aspirations of the Society. The recipient is characterized by a love of science, a dedication to community service and a commitment to the evolution of British Columbia as an international centre of science and technology. Either through their activities on behalf of the Society and/or by the example they provide by their life's achievements, Friends have contributed significantly to the development of a science culture in our province.

- 2018 Bryan Tisdall
- 2017 Trudi Coblenz
- 2014 Gordon Campbell
- 2010 Dr Ken Spencer
- 2009 Stan Hagen
- 2006 John Pitts
- 1994 Dr Michael Smith
- 1992 Haig Farris
- 1991 Barbara Brink
- 1990 Dr Cecil Green



Bryan Tisdall—  
Past President & CEO  
and Friend of Science World

# PATRONS OF SCIENCE WORLD



To be named a Patron of Science World is an honour bestowed by the Members of the Science World Society on a volunteer or former employee, who has contributed in a significant way to the development of the Society.

The Society recognizes that a community facility like Science World can only thrive if it is the recipient of the collective contributions of energy, wisdom, time, financial resources and goodwill from the leaders of the community it serves. The Patrons of Science World are examples of this leadership.

2018	Nicole Geyer	2012	Donna O'Neill	2009	Munro MacKenzie
2018	Andrew Harries	2012	Dr Andrew Wright	2009	John Murphy
2017	Dr John Cairns	2011	Bruce Drake	2009	Dr Ken Spencer
2017	Bruce McLeod	2011	Stewart Ladyman	2008	Jeff Devins
2015	Dr Robin Louis	2011	Morgan Sturdy	2008	Bob Wiens
2015	Dr Lindsay Machan	2011	Peggie Terry	2007	Eileen Stewart
2015	Peter J. O'Callaghan	2010	Ross Mitchell	2006	Bill Bullis
2015	Jim Pickles	2010	Garry Rasmussen	2006	Don Young
2015	Rich Simons	2009	Trudi Coblenz	2005	Stuart Culbertson
2014	Dr Bruce Beirsto	2009	Caroline Jellinck	2005	Chris Kelly
2014	Paul Geyer	2009	Michael Lee	2005	Dr Ron Marteniuk

We were deeply saddened by the passing of Jim Pickles on August 31, 2017. Jim served as Treasurer on the Science World Board of Trustees and was named a Patron of Science World for his dedicated and enthusiastic service.

# PATRONS OF SCIENCE WORLD

2005	Anne Sutherland	1997	Anthony Barke	1995	David Ingram	1993	Milton Wong
2004	Eric Kong	1997	Brian Canfield	1995	Lucille Pacey	1993	Dr John Wormsbecker
2004	Victoria Withers	1997	Robert Carlisle	1993	Larry Bell	1992	Dr Harold Copp
2003	Dr Lorne Whitehead	1997	Robert A. Dickinson	1993	John Fraser	1992	Don Graham
2001	Dr Alan Pelman	1997	Danny Gaw	1993	Jane Hungerford	1992	John Pitts
2000	Drinda Scott	1997	Dr Colin Jones	1993	Alex Klopfer	1991	Dr Erich Vogt
1999	Peter Lige	1997	Dr Maria Klawe	1993	Nurjehan Mawani	1988	Hon David C. Lam
1999	Fei Wong	1996	Dr Elmer Froese	1993	Rudolph North	1987	Dr Gerhard Herzberg
1998	George Battye	1996	Nairn (Buz) Knott	1993	E. Lynn Patterson	1987	Dr John Polanyi
1998	Dr Sid Katz	1996	Ron Woznow	1993	Don Risk	1987	Hon Robert G. Rogers
1998	Kevin O'Neill	1995	Michael Francis	1993	Ron Stern		



# FINANCIAL SUMMARY

The financial statements of A.S.T.C. Science World Society for the year ended February 28, 2018 have been audited by PricewaterhouseCoopers LLP, Chartered Professional Accountants. These financial statements are available upon request.

This table shows revenues and expenses from 2017/18, relative to fiscal years 2016/17 and 2015/16. They are an illustrative summary only and are not intended to replace the full audited financial statements.

*Statement of Operations extracted from the financial statements for the year ended February 28, 2018 (in thousands of dollars).*

		Year ended February 28, 2018	Year ended February 28, 2017	Year ended February 29, 2016
<b>REVENUES</b>				
	Admission and membership	9,693	8,468	8,897
	Retail revenue and contracted services	3,449	3,300	3,366
	Donations and sponsorships	1,566	1,696	1,454
	Grants	293	300	228
	Interest	181	170	153
	Miscellaneous	87	27	27
		15,269	13,961	14,125
<b>EXPENSES</b>				
	Visitor experience, development and facilities	4,033	3,578	3,631
	Marketing, communication and sales	2,911	2,635	2,997
	Exhibits, theatres and programs	2,823	2,440	2,669
	Support services	2,963	2,675	2,106
	Community engagement	1,556	1,451	1,340
		14,286	12,779	12,743
<b>EXCESS OF REVENUES OVER EXPENSES BEFORE AMORTIZATION</b>				
		983	1,182	1,382
	Amortization of exhibits and property and equipment	(3,004)	(2,540)	(2,395)
	Amortization of deferred contributions related to exhibits and property and equipment	2,198	1,850	1,815
		(806)	(690)	(580)
<b>EXCESS OF REVENUES OVER EXPENSES</b>				
		177	492	802

## REVENUES



<b>63.4%</b>	Admission and membership
<b>22.6%</b>	Retail revenue and contracted services
<b>10.3%</b>	Donations and sponsorships
<b>1.9%</b>	Grants
<b>1.2%</b>	Interest
<b>0.6%</b>	Miscellaneous

<b>28.2%</b>	Visitor experience, development and facilities
<b>20.7%</b>	Support services
<b>20.4%</b>	Marketing, communication and sales
<b>19.8%</b>	Exhibits, theatres and programs
<b>10.9%</b>	Community engagement

## EXPENSES



Human excrement and food waste is turned into gas through anaerobic digestion to fuel this 40-seater bus, proving that even sewage and scraps can be valuable resources.

Bristol, England



Gift organization ADOPTA forest was formed after savings and donations purchased Cerro Chusani's landscape out from severe deforestation.

Costa Rica, Panama



Growing native bamboo not only reduces soil erosion on deforested land - it's also being used to make bamboo bicycles in rural Ghana, reducing poverty and providing affordable transportation.

Kumasi, Ghana







One dedicated man started a movement using cheap, simple, and traditional solutions to bring drinking water to parched villages in India, building social networks and empowering communities to protect their water.

Alwar, India



...ion use  
... up in 1  
... in 19  
... Sumatran rainforests. The  
... expand to Africa and South

Sumatra, Indonesia



## OUR MISSION

---

Through science and nature,  
we ignite wonder and empower dreams.

## SCIENCE WORLD

---

TELUS World of Science  
1455 Quebec Street  
Vancouver, BC  
Canada V6A 3Z7  
[scienceworld.ca](http://scienceworld.ca)  
Charitable BN 10673 4809 RR0001

